

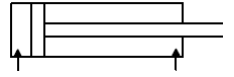


# QH<sup>TM</sup> CYLINDRES / CYLINDERS

HYDRAULIQUE / HYDRAULIC

POUCE EXCAVATRICE / EXCAVATOR THUMB

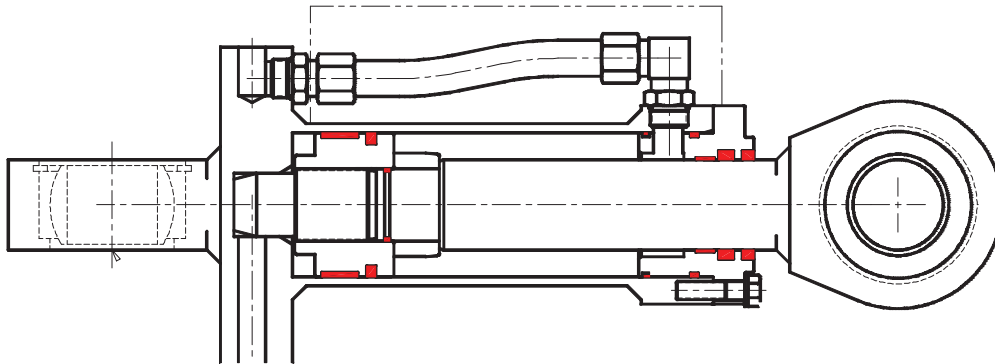




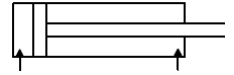
Our QH THUMB Series is designed specifically for hydraulic thumb applications on track mounted and wheeled excavators. Heavy duty construction, a guarded transfer hose and oversize spherical bearing mounts at both ends all contribute to long life and trouble free service in this rugged working environment.

**FEATURES:**

- Induction Hardened Chrome Plated Rod is standard.
- Heavy-duty piston is threaded and adhesive bonded to the rod.
- Large fixed cushions both ends are standard.
- Spherical bearings both ends are standard.
- Ports are Code 61 4-bolt flange on 4" bore and larger.
- Ports are ORB on 3 1/2" bore and smaller.
- Rated working pressure is 5000 psi.
- When retracting the rod end is the stop, not the piston, thereby reducing stress on the piston.
- Rugged construction with oversize pins, head bolts and thick wall barrels.
- The transfer hose is protected by a thick steel guard.



NOTE: picture shows the 4.00" bore and larger style of construction



CYLINDRES / CYLINDERS

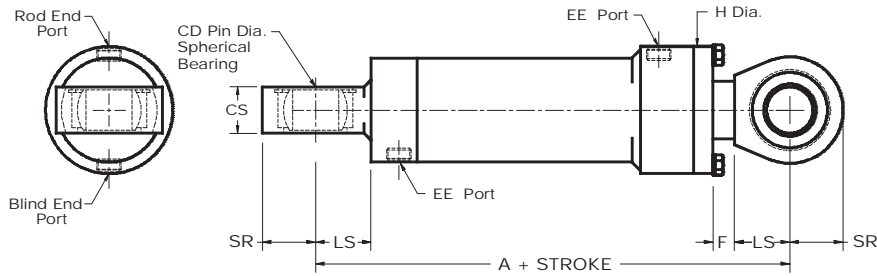


Figure 1. 2.00" and 2.50" bore cylinders

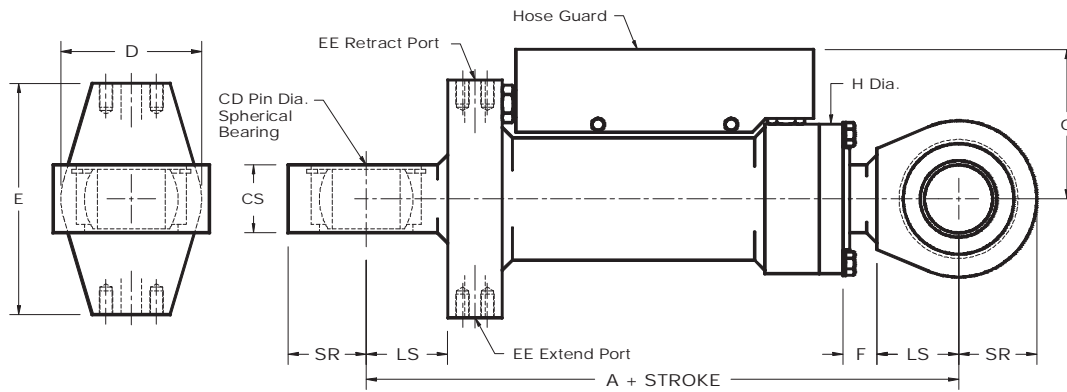


Figure 2. 3.00" bore and larger cylinders

Bore	Rod	A	D	E	EE	F	G	H	CD	LS	CS	SR
2	1 3/8	9.00	-	-	#8 ORB	0.50	-	3.25	1.00	1.50	1.25	1.31
2 1/2	1 3/4	9.50	-	-	#8 ORB	0.75	-	3.75	1.00	1.50	1.25	1.31
3	1 3/4	11.50	4.13	7.00	#8 ORB	0.75	4.75	4.50	1.50	2.25	1.75	2.00
3 1/2	2	13.00	4.88	8.00	#12 ORB	0.75	5.13	5.50	2.00	2.63	2.25	2.50
4	2 1/2	15.00	5.50	8.75	3/4" Code 61	1.63	5.38	6.00	2.50	3.00	2.50	2.88
5	3	15.25	6.50	10.25	3/4" Code 61	1.56	6.00	7.25	2.50	3.00	2.50	2.88
5 1/2	3 1/2	16.50	7.00	10.75	1" Code 61	0.69	6.25	8.00	3.00	3.75	2.75	3.63
6	3 1/2	17.25	7.50	11.25	1" Code 61	0.56	6.88	8.50	3.00	3.75	2.75	3.63

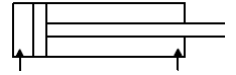
**MATERIAL SPECIFICATIONS**

<i>Barrel:</i> DOM Tubing ASTM 513/519 Gr. 1020/1026	<i>Piston Seal:</i> Filled Teflon with Nitrile Loader
<i>Head:</i> Ductile Iron ASTM A536 (65-45-12)	<i>Rod seal:</i> Polyurethane
<i>Piston:</i> Ductile Iron ASTM A536 (65-45-12)	<i>Wear Ring:</i> Reinforced Nylon
<i>Rod:</i> C1045 Induction Hardened Chrome Plated	<i>Wiper:</i> Polyurethane on Phosphated Steel
<i>Accessories:</i> Steel CSA G40-21 Gr. 44W	<i>O-Ring:</i> Nitrile
<i>Bolts:</i> SAE Grade 8	<i>Back-Up:</i> Nitrile

Seal Temperature Range: -65° F to 225° F (-54° C to 107° C)



POUCE EXCAVATRICE / EXCAVATOR THUMB 5000 PSI



CYLINDRES / CYLINDERS

MODEL	Bore	Rod	Pin / Pin Retracted	Spherical Bearing	Notes
QHTHUMB20-(stroke)-14-H1281	2	1 3/8	9.00 + Stroke	1.00	No transfer tube or guard
QHTHUMB25-(stroke)-18-H1282	2 1/2	1 3/4	9.50 + Stroke	1.00	No transfer tube or guard
QHTHUMB30-(stroke)-18-C1486	3	1 3/4	11.50 + Stroke	1.50	
QHTHUMB30-(stroke)-18-C1463	3	1 3/4	13.00 + Stroke	2.00	3.50" cyl. mounting dimensions.
QHTHUMB35-(stroke)-20-C1461	3 1/2	2	13.00 + Stroke	2.00	
QHTHUMB35-(stroke)-20-C1481	3 1/2	2	15.00 + Stroke	2.50	4.00" cyl. mounting dimensions.
QHTHUMB40-(stroke)-25-C1482	4	2 1/2	15.00 + Stroke	2.50	
QHTHUMB40-(stroke)-25-C1460	4	2 1/2	15.25 + Stroke	2.50	5.00" cyl. mounting dimensions.
QHTHUMB50-(stroke)-30-C1462	5	3	15.25 + Stroke	2.50	
QHTHUMB50-(stroke)-30-C1483	5	3	16.50 + Stroke	3.00	5.50" cyl. mounting dimensions.
QHTHUMB55-(stroke)-35-C1487	5 1/2	3 1/2	16.50 + Stroke	3.00	
QHTHUMB60-(stroke)-35-C1551	6	3 1/2	17.25 + Stroke	3.00	

STANDARD THUMB CYLINDERS				
MODEL	Bore	Stroke	Rod	Weight
QHTHUMB35-36-20-C1461	3 1/2	36	2	160 lbs
QHTHUMB40-40-25-C1482	4	40	2 1/2	215 lbs
QHTHUMB40-45-25-C1482	4	45	2 1/2	225 lbs
QHTHUMB50-40-30-C1462	5	40	3	305 lbs
QHTHUMB50-45-30-C1462	5	45	3	320 lbs
QHTHUMB55-44-35-C1487	5 1/2	44	3 1/2	450 lbs